



NEW



BATTERY-OPERATED GREASE-GUN 20V



BATTERY-OPERATED GREASE-GUN 20V





BATTERY-OPERATED GREASE-GUN 20V

Pressure release valve prevents excess pressure build up in the system, preventing gear damage.

Alluminium die cast head with air release valve & bulk loader

Integrated foot to place the gun on flat surfaces

40''(1m) high pressure hose with anti-kink spring and coupler



Display panel indicates:

- Battery level
- Grease level
- Unit of dispensing
- Pump speed

User controlled grease outflow with the press of a button

It is designed to offer an unmatched flexibility and high-quality performances. This is the ideal product for a daily greasing and maintenance work.



ART. 015-3180-000
The plastic carry-along case has space designed for an additional battery



ART. 015-3185-000
Multi purpose wide range input charger (12-240 V / 50-60 Hz)



ART. 015-3186-000
Li-Ion battery 20V - 2000 mAh



BATTERY-OPERATED GREASE-GUN 20V



015-3180-000

Battery-operated grease-gun 20V Li-Ion, suitable for 400g standard and screw Lube-Mec cartridges

The display indicates:

Battery level, grease level, amount of grease dispensed and no. cycles.

The charger is protected against overload (charging time approx. 100% in 60 min. / 80% in 30 min.)

Fully charged battery dispenses up to 12 grease cartridges in conditions of free exit.

The plastic carry-along case has space designed for an additional battery

Battery-operated grease-gun 20V Li-Ion

Article	Capacity	Max pressure	Max delivery	Battery
015-3180-000	500 g	690 bar	85 g/min	20V Li-Ion

Equipped with:

Plastic carry-along case

Battery operated grease-gun 20V Li-Ion

1000mm flexible hose with 4-jaws coupler

Art. **015-3185-000** Multi purpose wide range input charger (12-240 V/ 50-60 Hz)

Art. **015-3186-000** Li-Ion battery 20V - 2000 mAh

Shoulder strap

It is suitable for 400 g cartridges Ø 52 mm



015-3185-000



015-3186-000



015-3180-000



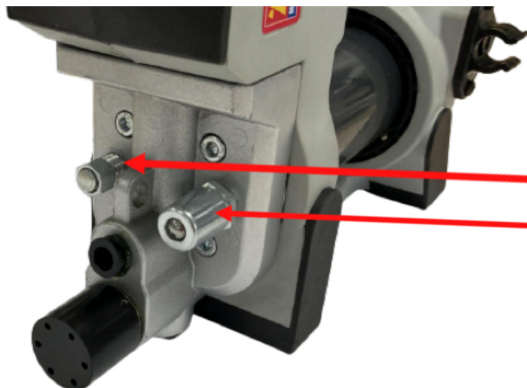
6,130



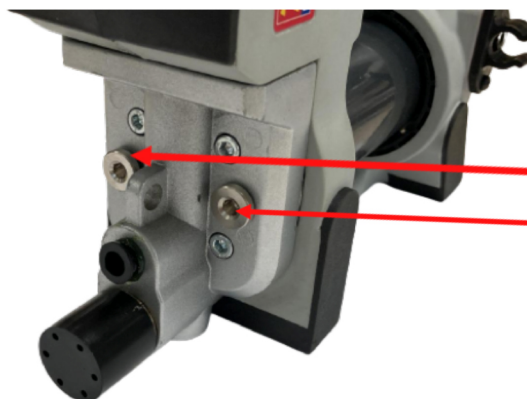
0,010



1



Configuration for standard Grease Cartridge Ø52 mm 400 g



Configuration for screw Lube-Mec Grease Cartridge Ø55 mm 400 g

